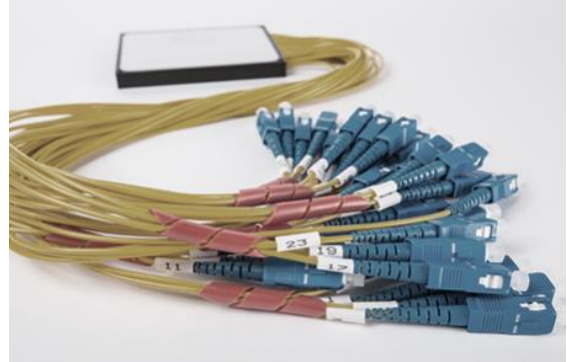


# Planar Lightguide Circuit Splitter

## ABS case Type

### DESCRIPTION

KOC's PLC Splitter divides uniformly optical signals from input ports to multiple outputs. It can also be operated in the reverse direction to combine multiple optical signals into one or two fibers with low insertion loss and uniformity. ABS case type PLC splitter has ruggedized 2.0mm In&Output cord for mounting in the Terminal box or FDF.



### FEATURES

Low Insertion Loss and Uniformity  
Compliance with Telcordia GR-1209,1221 Core  
Compliance with Telcordia GR-326 Core (Connector)  
EU Regulation : RoHS  
Wide range of operating wavelength

### APPLICATION

Fiber To The Home network  
CATV network

### OPTICAL PERFORMANCE

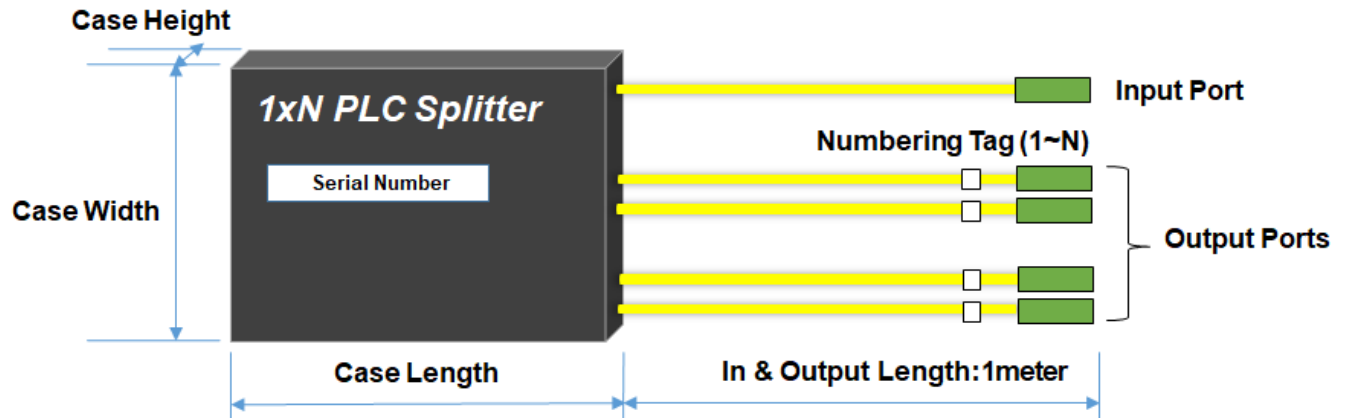
Port Configuration	Insertion Loss(Max)	Uniformity (Max)	PDL (Max)	Directivity (min)	Return Loss(min)	Case size (mm)
1x2	3.8dB	0.6dB	0.15dB	55dB	55dB	100x80x10
1x4	7.2dB	0.6dB	0.20dB			
1x8	10.5dB	0.8dB	0.20dB			
1x16	13.6dB	1.0dB	0.30dB			120x80x18
1x32	17.0dB	1.3dB	0.30dB			140x115x18
1x64	20.4dB	1.8dB	0.30dB			

*In case of terminated with connector, Add 0.5dB at each port*  
*Operating wavelength : 1260~1650nm*  
*Fiber : G.657.A1 and G.657.A2 are available*

# Planar Lightguide Circuit Splitter

## ABS case Type

### CONFIGURATION



Classification	Part Number	Description
1xN ABS type	PLC102-A1-ABS-20/10/SA-20/10/SA	1x2 PLC Splitter with G.657.A1, ABS type Input : 2.0mm Loose tube, 1meter, with SC/APC Output : 2.0mm Loose tube, 1meter, with SC/APC
	PLC104-A1-ABS-20/10/SA-20/10/SA	1x4 PLC Splitter with G.657.A1, ABS type Input : 2.0mm Loose tube, 1meter, with SC/APC Output : 2.0mm Loose tube, 1meter, with SC/APC
	PLC108-A1-ABS-20/10/SA-20/10/SA	1x8 PLC Splitter with G.657.A1, ABS type Input : 2.0mm Loose tube, 1meter, with SC/APC Output : 2.0mm Loose tube, 1meter, with SC/APC
	PLC116-A1-ABS-20/10/SA-20/10/SA	1x16 PLC Splitter with G.657.A1, ABS type Input : 2.0mm Loose tube, 1meter, with SC/APC Output : 2.0mm Loose tube, 1meter, with SC/APC
	PLC132-A1-ABS-20/10/SA-20/10/SA	1x32 PLC Splitter with G.657.A1, ABS type Input : 2.0mm Loose tube, 1meter, with SC/APC Output : 2.0mm Loose tube, 1meter, with SC/APC
	PLC164-A1-ABS-20/10/SA-20/10/SA	1x64 PLC Splitter with G.657.A1, ABS type Input : 2.0mm Loose tube, 1meter, with SC/APC Output : 2.0mm Loose tube, 1meter, with SC/APC

# Planar Lightguide Circuit Splitter

## ABS case Type

### ORDERING INFORMATION

